



Eastlake Professional Building

Office, Therapy, Dentistry Space for Lease

Craig Myhre
(206) 329-0085
CMyhre@cornellandassociates.com

Cornell & Associates, Inc. **DISCLAIMER:** The information contained herein has been obtained from sources believed to be reliable; however, no representations are made to its accuracy. Prospective tenants or buyers should consult their own professional advisors and conduct an independent investigation. Properties are subject to change in price and/or availability without notice.



PROPERTY HIGHLIGHTS

- Available 2692 SF
- 5 individual offices (could be increased to 7)
- Currently vacant
- Office, Therapy, Dentistry
- 6 stall on-site parking
- 2 restrooms (1 with a shower)
- Alarm system
- Common area kitchenette
- HVAC



LISTING INFORMATION

EASTLAKE PROFESSIONAL BUILDING

2627 Eastlake Ave E, Seattle

AVAILABILITY

2692 SF

LEASE RATE

\$21.40 /SF/YR

LEASE INFORMATION

Move in date Currently vacant

Lease Terms 3-5 year

Lease Type Gross/Fully Serviced

PROPERTY INFORMATION

Use Office, Therapy, Dentistry

A/C Yes

Restrooms 2 private (1 with shower)

Common area Kitchenette

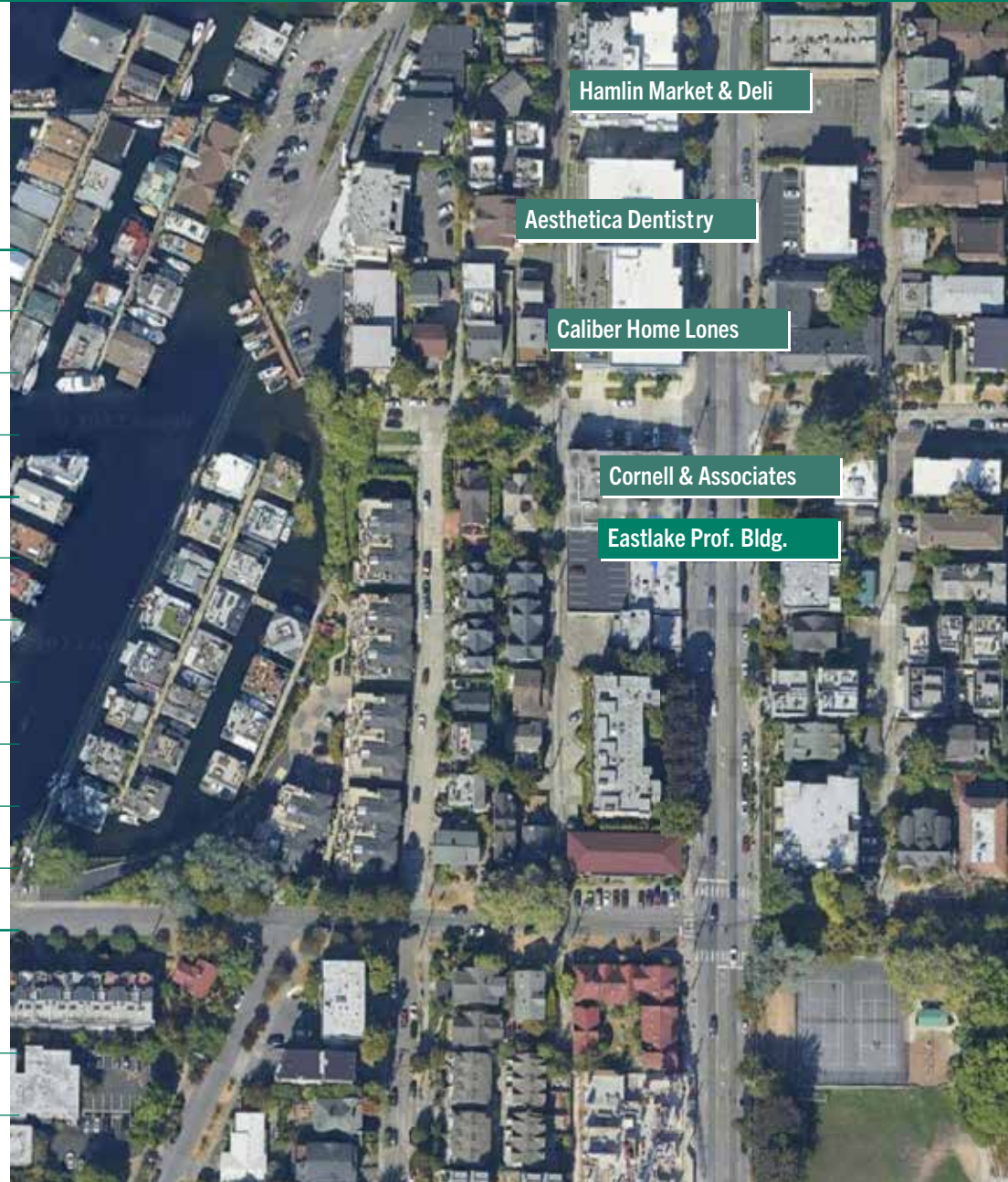
Level Street

Uncovered Parking 6 stalls, on-site

LOCATION

Neighborhood Eastlake

Cross Street E Edgar St



Craig Myhre

(206) 329-0085

CMyhre@cornellandassociates.com

Cornell & Associates, Inc. DISCLAIMER: The information contained herein has been obtained from sources believed to be reliable; however, no representations are made to its accuracy. Prospective tenants or buyers should consult their own professional advisors and conduct an independent investigation. Properties are subject to change in price and/or availability without notice.





Craig Myhre
(206) 329-0085
CMyhre@cornellandassociates.com

Cornell & Associates, Inc. DISCLAIMER: The information contained herein has been obtained from sources believed to be reliable; however, no representations are made to its accuracy. Prospective tenants or buyers should consult their own professional advisors and conduct an independent investigation. Properties are subject to change in price and/or availability without notice.





Craig Myhre
(206) 329-0085
CMyhre@cornellandassociates.com

Cornell & Associates, Inc. **DISCLAIMER:** The information contained herein has been obtained from sources believed to be reliable; however, no representations are made to its accuracy. Prospective tenants or buyers should consult their own professional advisors and conduct an independent investigation. Properties are subject to change in price and/or availability without notice.





Craig Myhre
(206) 329-0085
CMyhre@cornellandassociates.com

Cornell & Associates, Inc. **DISCLAIMER:** The information contained herein has been obtained from sources believed to be reliable; however, no representations are made to its accuracy. Prospective tenants or buyers should consult their own professional advisors and conduct an independent investigation. Properties are subject to change in price and/or availability without notice.



NEIGHBORHOOD DETAILS

The Eastlake Neighborhood is conveniently located between the University District and Downtown with easy access to Capitol Hill, South Lake Union, and Wallingford. Lake Union offers water activities and features Gas Works Park, the Space Needle, and the Museum of History & Industry.

Eastlake Avenue East is an active street with businesses, restaurants, bars, cafes, and retail catering to the surrounding neighborhoods.

